

## TENDER NOTICE

Sealed Bids are invited from reputable firms/suppliers registered with GST Deptt. for supply of following items for International Islamic University, Islamabad:

S#	Name of Item	Document Fee
1.	<b>Furniture Items</b>	<b>Rs.1,000/-</b> (Specifications and quantity of the items are mentioned in the tender documents.)
2.	<b>Electrical Items</b>	<b>Rs.1,000/-</b> (Specifications and quantity of the items are mentioned in the tender documents.)

2. Tender documents can be downloaded from [www.ppra.org.pk](http://www.ppra.org.pk) and [www.iiu.edu.pk](http://www.iiu.edu.pk). Tender fee of Rs.1,000/- each (Non-refundable) will be deposited alongwith bid/tender in the shape of Call Deposit/Bank Draft in favour of IIUI.

3. Tenders valid for a period of 06 months on F.O.R. basis along-with earnest money @ 2% of the total value of tender (refundable) in the shape of Call Deposit/Bank Draft in the name of International Islamic University, Islamabad, must reach the undersigned on or before **28-01-2015 at 11:00 a.m.** which will be opened on the same date at **11:30 a.m.** in the presence of the bidders/their representatives who may like to attend the opening ceremony. The GST Registration No. issued by the Sales Tax Department must be mentioned in the bid, otherwise, tender shall not be considered. Price quoted must inclusive of General Sales Tax. Tenders without required earnest money or for lesser amount will be rejected as non responsive.

4. The University reserves the right to accept or reject any/all bid(s)/tender(s) in terms of Section-33 of Public Procurement Rules, 2004.

**Mr. Asif Munri Babar, Addl. Director (P&S), Phone # 9019261 & 9019258**

**INTERNATIONAL ISLAMIC UNIVERSITY ISLAMABAD**  
**(Purchase & Stores Section)**

No. 1/3/2015-P&S-

Dated: \_\_\_\_\_

M/s \_\_\_\_\_  
\_\_\_\_\_  
\_\_\_\_\_

SUBJECT: **TENDER DOCUMENTS FOR SUPPLY OF FURNITURE/ELECTRICAL ITEMS**

Dear M/s,

You are invited to submit tender for supply of Furniture/Electrical items made in accordance with the specifications at **Annexed-I & II** respectively.

2. Sealed tenders valid for a period of 6 months alongwith Earnest Money @ 2% of the total value of tender in the shape of Call Deposit/Bank Draft in the name of "International Islamic University, Islamabad" must reach the undersigned on or before **28-01-2015** at 11.00 a.m. The tenders will be opened on the same day at 11:30 a.m. in the presence of the bidders/their representatives who may like to attend the opening.
3. Tenders received after the due date and time will not be entertained.
4. Amendments/alteration/cutting and overwriting etc. in the tender must be signed in full by the person who has signed the tender. Changes or revisions in rates after the opening of tender will not be allowed.
5. Tenders must be in a sealed cover and on the envelope, it must be written in bold letter **"TENDER FOR SUPPLY OF FURNITURE/ELECTRICAL ITEMS."** to be opened on **28-01-2015** & should be sent in the name of Addl. Director (P&S), International Islamic University, Administration Block, New Campus, Sector H-10, Islamabad.
6. ***Rates quoted must be inclusive of General Sales Tax and the total cost of the items. Tender without required earnest money or for lesser amount will be treated as non responsive.***
7. The General Sales Tax Registration No. issued by the Sales Tax Department must be quoted in the bid, otherwise, tender shall not be considered.
8. The firms will have to provide the samples for assessment of quality and workmanship on demand.
9. The successful bidder shall have to supply the required items on F.O.R. basis strictly within the stipulated period mentioned in the Supply Order otherwise full Earnest Money will be forfeited.
10. The University reserves the right to accept or reject any/all bid(s)/tender(s) in terms of Section-33 of Public Procurement Rules, 2004.



**(Hafiz Amar Raza)**  
Asstt. Director-I (P&S)  
Phone # 051-9019258  
051-9019260



**SPECIFICATION AND QUANTITY OF FURNITURE ITEM FOR IIUI**

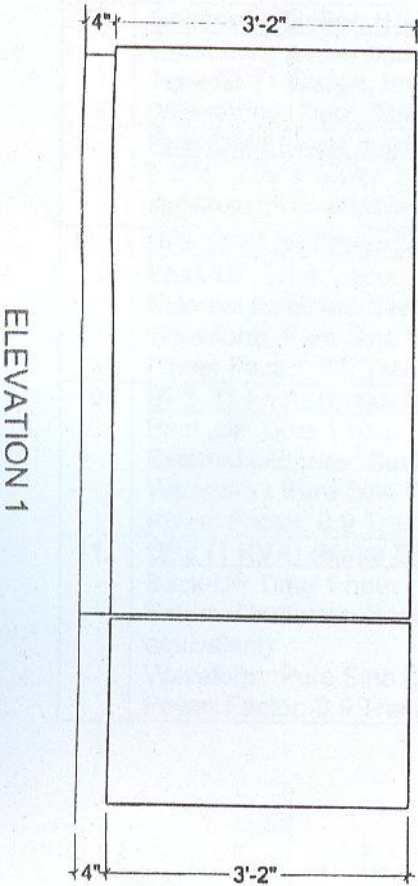
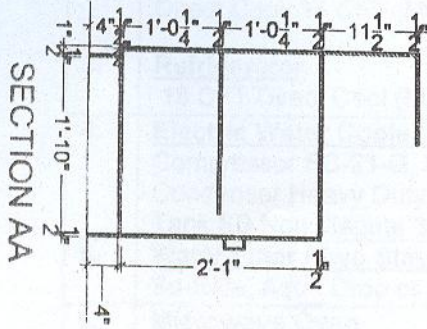
<b>S#</b>	<b>Name of the item &amp; specifications</b>	<b>Qty.</b>
1.	<b><u>Steel Bed</u></b> Size: L 75" x W 36" x H 25" Upper side, 18" Lower side Frame made of Iron square pipe 1 1/2" x 1 1/2" 16 SWG (Guage) with centre support Support Iron Patti 1"x 1"(soother) Paint: Grey	1050
2.	<b><u>Matress</u></b> Matress Size: 3' x 6' x 4" (Make Molty Foam /Five Star Foam or equivalent # I quality foam)	1050
3.	<b><u>Study Tables:</u></b> Size: top (3 x 2)', 3/4" thick in lamination. with sheesham edges. One drawer lockable having alfit channel, steel frame square 1'x1" pipe in 18 Gauge (SWG). <b>As per sample available in Boys Hostel No. 4.</b>	1050
4.	<b><u>Study/Mess Chair,</u></b> Frame made of Iron pipe, plastic seat and back (Model # 796-B Made by M/s Citizen International Plastic Industries (Pvt.) Ltd. Gujranwala or equivalent) <b>As per sample available in Boys Hostel No. 4</b>	Study=1050 Mess=540
5.	<b><u>Dinning/Mess Table</u></b> 4'x4' (Square) Top made in 3/4" lamination & lipping with sheesham wood 1 1/2" show and steel frame 1'x1' 18 SWG square pipe with standard height (2'6") <b>As per sample available in Boys Hostel No. 4</b>	54
6.	<b><u>Sofa Set (5 Seaters)</u></b> Made of Solid Sheesham wood structure with No.1 quality Molty Foam seat and back with project fabric/Leatherette not less than Rs.450 per metre and fine polish work. <b>As per sample available at Office of Addl. Director (P&amp;S), Admin. Block, Sector H-10, IIUI.</b>	18
7.	<b><u>Officer Table</u></b> Size: (4 1/2'x2 1/2'x3') Frame made in 3/4" lamination & lipping with sheesham wood 1 1/2" show laminated board on front, good quality 3 drawers lockable tea tray on right side, with foot rod, key board & mouse tray and shelf for CPU on left side A class lacquer polish wherever required. <b>(As per sample available at P&amp;S Section, IIU)</b>	12
8.	<b><u>Officer Chair (Revolving LB)</u></b> Revolving and hydraulic with one year guarantee, Taiwan base and cylinder, Arm 606 PVC, seat & back of molty No.1 quality foam with project fabric not less than Rs.450 per metre. <b>(As per sample available at P&amp;S Section, IIU)</b>	12
9.	<b><u>Reception Counter for Main Block</u></b> As per drawing which is enclosed herewith	3
10.	<b><u>Steel Cabinet(Almirahs)/Ward Robes:</u></b> Fully made in 20 gauge material. (Size Height-6'x4', Depth- 2') Two separate Hanger with Door, separate lock, two shelf each upper & lower side. <b>As per sample available in Boys Hostel # 4.</b>	90
11.	<b><u>Computer Table (Double)</u></b> Size 5'x22"x30" frame made 2"x1" MS pipe of 18 SWG. The inner frame to contain 2 units of CPH and trays for key-board and Mouse. Trays operating on imported metal channels. Provision of ducting at the back, to conceal the wiring and provision of detachable-board in the rear for power-supply. The whole structure made from special MASA-TEAK LAMINATE, with solid Sheesham-wood lippings. The steel-frame painted in automotive GREY paint. <b>As per sample available at Deptt. of Civil Engineering, FET (Male), IIU.</b>	30
12.	<b><u>Lab/Computer Chair (with arm)</u></b> Revolving and hydraulic with one year guarantee, five star base, Taiwan cylinder, seat & back of molty No.1 quality foam with project fabric not less than Rs.450 per metre. <b>As per sample available at Deptt. of Civil Engineering, FET (Male), IIU</b>	60



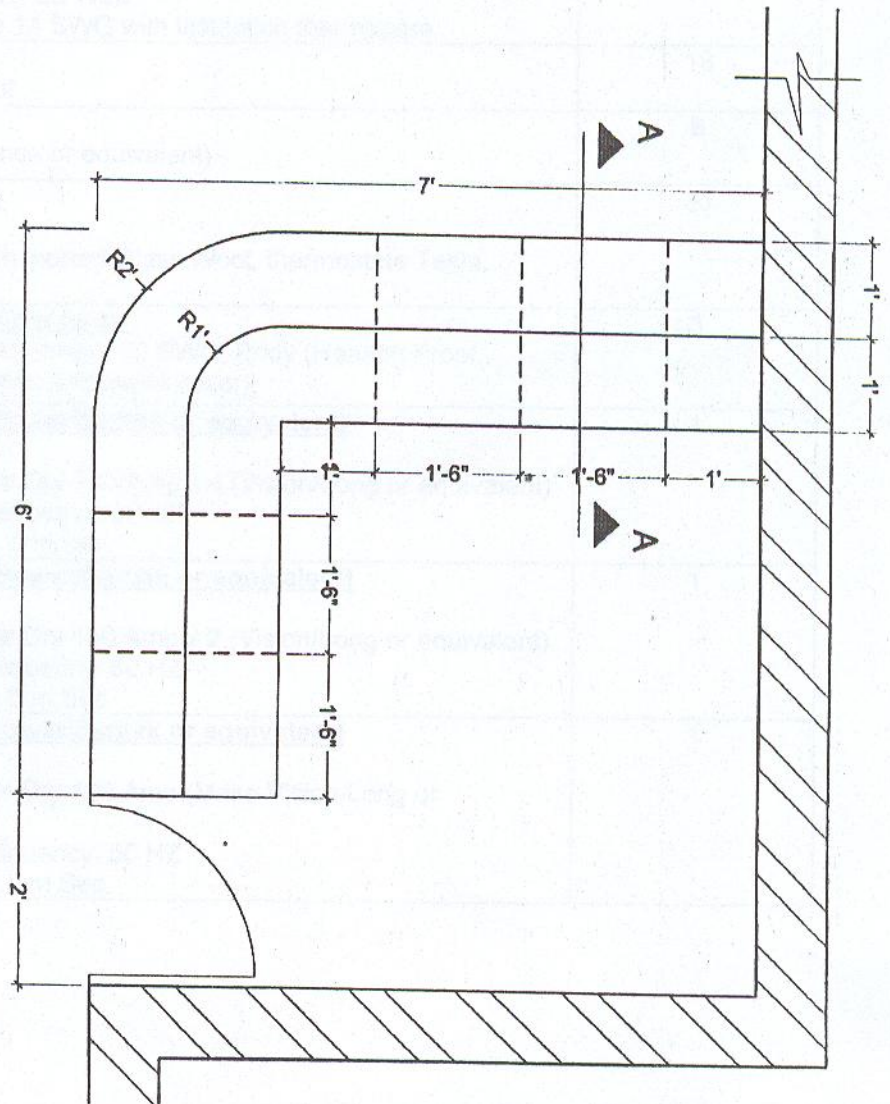
**SPECIFICATION AND QUANTITY OF ELECTRICAL ITEMS**

<b>S#</b>	<b>Name of the item &amp; specifications</b>	<b>Qty.</b>
<b>1.</b>	<b><u>Side Rack:</u></b> (Size 3'x14" x2 ½') three shelves made of seasoned Sheesham win board back covered with Sheesham ply. <b>(As per sample available at P&amp;S Section, IIU).</b>	<b>6</b>
<b>2.</b>	<b><u>Visitors/Office Chairs(cushioned):</u></b> (31H x 18 ½W x 20"D, Seat height: 18") Frame of made of Sheesham wood (lacquer polish) with project fabric not less than Rs.450 per metre. Molty Foam No.1 quality. . <b>(As per sample available at P&amp;S Section, IIU).</b>	<b>15</b>
<b>3.</b>	<b><u>Computer Table (single):</u></b> Size: (3'x22"x 30" H) Made of lamination & lipping with sheesham wood 1 ½" show. one drawer with lock, shelf for CPU, keyboard and mouse trays on imported bearing type channels, made in ¾" thick high quality laminated board, top ¾" chipboard with pressed formica, good quality edge binding in sheesham wood, finished in lacquer polish. . <b>(As per sample available at P&amp;S Section, IIU)</b>	<b>5</b>
<b>4.</b>	<b><u>Window Curtains</u></b> (3 Mess and 3 Prayer Hall) i) Curtain Cloth with stitching ii) Lying Aster iii) Panal Stitching iv) Pipe (Dolphin) v) Wood Patti 2 ½ " vi) End Brackets vii) Rings viii) <b>(As per sample available at P&amp;S Section, IIU)</b>	<b>Mess Hall = 188'.4"x 3= 565 sqft</b> <b>Prayer Hall= 267'.2"x3= 801'.6" sqft</b>
<b>5.</b>	<b><u>Carpet</u></b> (3 Prayer Hall) Olympia synthetic Fabric per square feet Fitting Charges	<b>33' x 20'.3"= 660.3 x 3 = 1980.9 sqf.</b>

# RECEPTION COUNTER DRAWING



ELEVATION 1





**SPECIFICATION AND QUANTITY OF ELECTRICAL ITEMS**

S#	Name of the item & specifications	Qty.
1.	<b><u>Dry Battery (Imported/Taiwan)</u></b> Sealed Lead Acid KPH 100 12N 12V 100 AH (Brand Long or equivalent)	20 Nos.
2.	<b><u>Deep Freezer</u></b> Direct Cool, 15 CFT (Make Waves or equivalent)	6
3.	<b><u>Refrigerator</u></b> 18 CFT Direct Cool (Make Dawalance or equivalent)	6
4.	<b><u>Electric Water Cooler (60 Gallon) per hour (Steel Body)</u></b> Compressor SC-21-G, Danfoss Secope Model Condenser Heavy Duty, Fan Motor 25 Watt Tank SS Non Magnat 304 Grade 14 SWG with insulation thermopore	18
5.	<b><u>Water Filter (Two Stage)</u></b> So-Safe, Aqua Drop or equivalent	18
6.	<b><u>Microwave Oven</u></b> Large size 30 Ltr, (Make Dawalance or equivalent)	6
7.	<b><u>Geyser 60 Gallon (Heavy Duty)</u></b> Outer body power coated Tank GI 11 Guage, Insulation with imported Glass Wool, thermostate Tesla, (Warrantee: Tank, Thermostat)	36
8.	<b><u>Roti Plant Local made (400 roti/per hour)</u></b> L 9 ½ ' x W 2' Motor 1 HP Plate thickness 12 SWG, Body (Heating Proof, stainless steel, double on both sides and upper cover)	3
9.	<b><u>UPS (5 KVA) (Make Deutsche Power/Santak or equivalent)</u></b> Back-UP Time 1 hour External batteries: Sealed Original Dry 100 Amp x 4 (Vision/Long or equivalent) Waveform: Pure Sine Wave Frequency: 50 HZ Power Factor: 0.9 Transfer Time: 0 m Sec.	1
10.	<b><u>UPS (3 KVA) (Make Deutsche Power/Santak or equivalent)</u></b> Back-UP Time 1 hour External batteries: Sealed Original Dry 150 Amp x 2 (Vision/Long or equivalent) Waveform: Pure Sine Wave Frequency: 50 HZ Power Factor: 0.9 Transfer Time: 0 m Sec.	1
11.	<b><u>UPS (1 KVA) (Make Deutsche Power/Santak or equivalent)</u></b> Back-UP Time 1 hour External batteries: Sealed Original Dry 100 Amp (Make Vision/Long or equivalent) Waveform: Pure Sine Wave Frequency: 50 HZ Power Factor: 0.9 Transfer Time: 0 m Sec.	1